



Flat 2

Lakeland House Marine Road East, Morecambe

Would you like sea views? Why not come and live on Morecambe seafront? This ground-level apartment has been nicely updated with a tasteful modern shower room and an upgraded, stylish open plan kitchen, it even has underfloor heating. It also has undercroft parking. Call our office to arrange a viewing.

Council Tax band: C

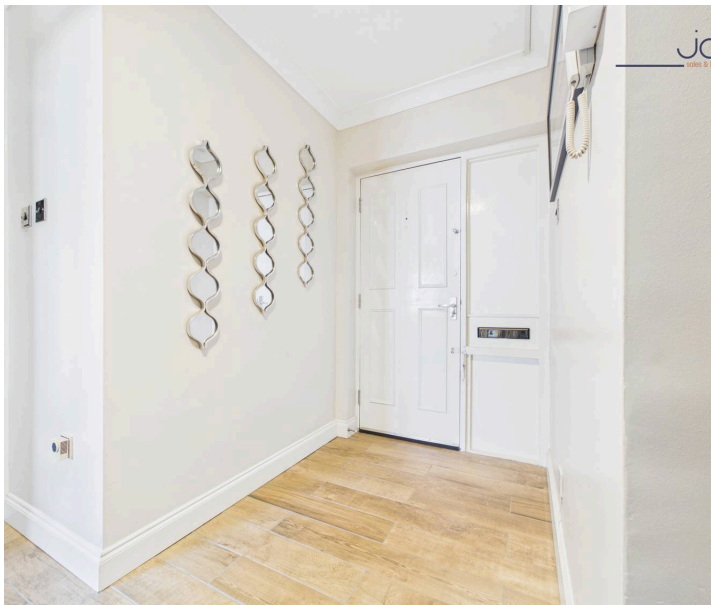
Tenure: Leasehold

EPC Energy Efficiency Rating: D

EPC Environmental Impact Rating: F

- Ground Level Apartment
- Stunning Views of Morecambe Bay
- One Bedroom | Fitted Wardrobes
- Open Plan Lounge Diner
- Open Plan Kitchen | Updated 8 years ago
- Modern Shower Room | Updated 8 years ago
- Upgraded Electric Heaters | Underfloor Heating
- Positioned on the corner of Princes Crescent

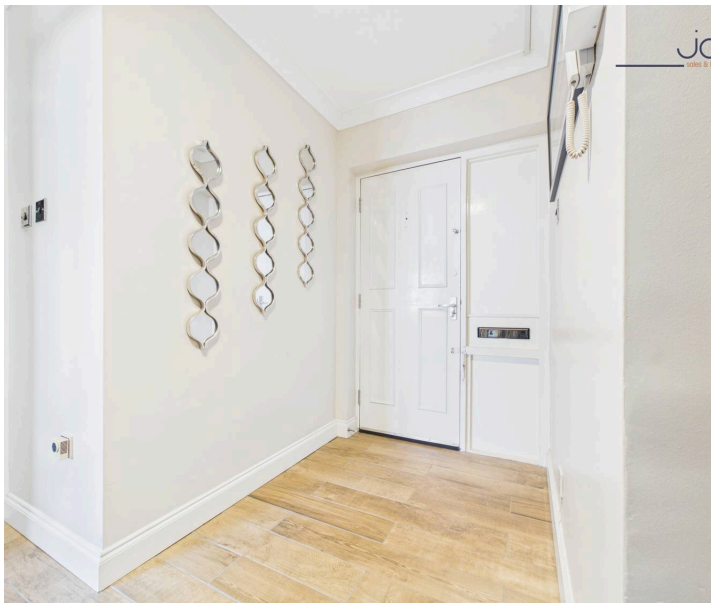






SECURE GATED

1 Parking Space

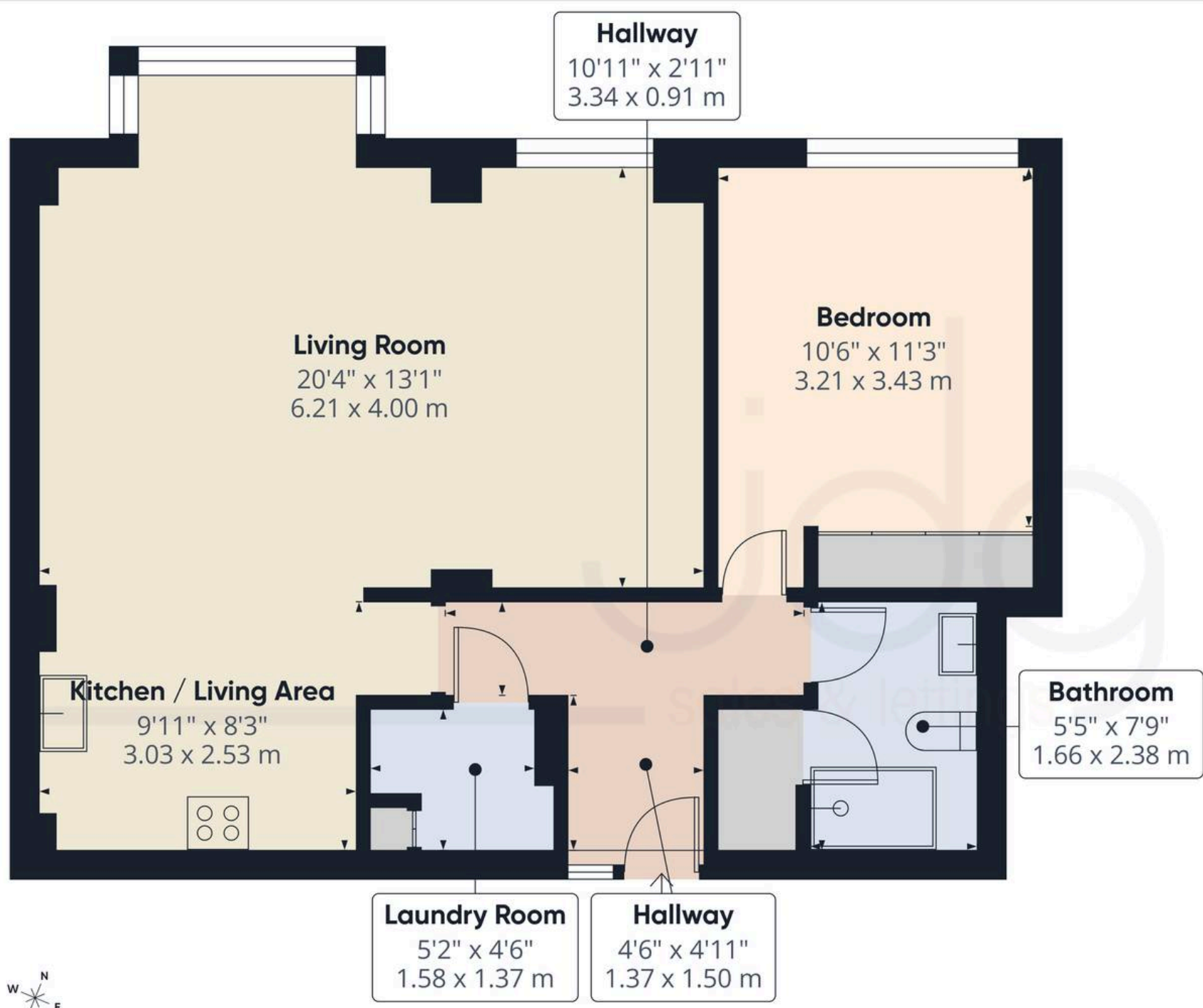












Approximate total area⁽¹⁾
646 ft²
59.9 m²

(1) Excluding balconies and terraces

Calculations reference the RICS IPMS 3C standard. Measurements are approximate and not to scale. This floor plan is intended for illustration only.

Floor 1





JDG Estate Agents

66 Market Street, Lancaster - LA1 1HP

01524 843322 • sales@jdg.co.uk • www.jdg.co.uk/