



# 22 Lune Square Damside Street

Lancaster, Lancaster

Looking for city living with a quieter edge? This first-floor apartment at Lune Square offers bright open-plan living, two bedrooms and leafy rear views, all moments from Lancaster city centre and the river.

Council Tax band: B

Tenure: Leasehold

EPC Energy Efficiency Rating: B

EPC Environmental Impact Rating:

- Leasehold Property
- Waterside city living with riverside walks on the doorstep
- First-floor apartment within a purpose-built development
- Light-filled open-plan living space suited to modern routines
- Sociable layout ideal for relaxed evenings and hosting friends
- Flexible second bedroom for home working or guests
- Main bedroom with en-suite for added comfort and convenience
- Walkable access to shops, cafés, restaurants and the city centre





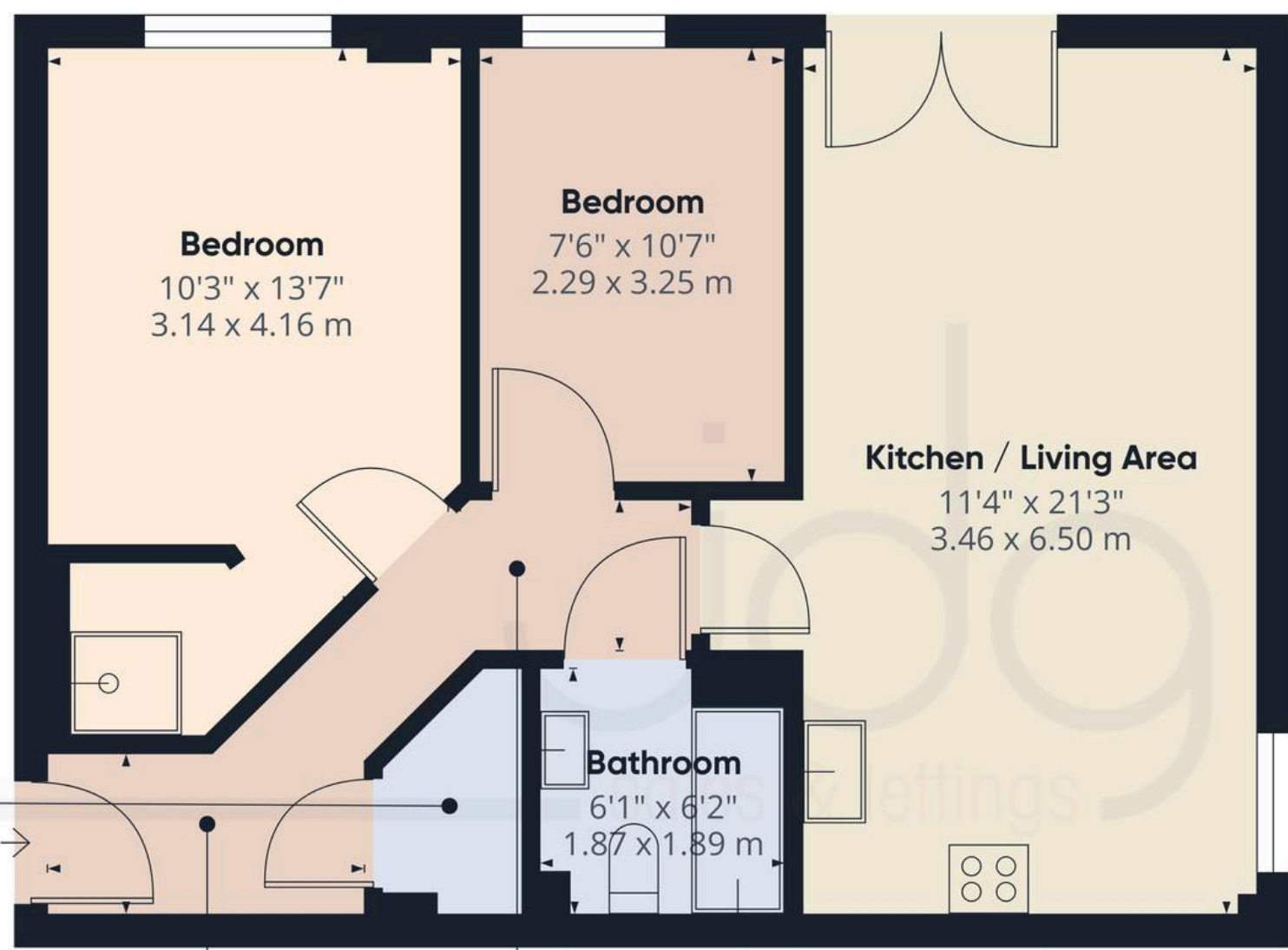












**Utility Room**

**Hallway**  
 7'5" x 4'4"  
 2.28 x 1.33 m

**Hallway**  
 5'10" x 3'11"  
 1.78 x 1.19 m

**Bedroom**  
 10'3" x 13'7"  
 3.14 x 4.16 m

**Bedroom**  
 7'6" x 10'7"  
 2.29 x 3.25 m

**Bathroom**  
 6'1" x 6'2"  
 1.87 x 1.89 m

**Kitchen / Living Area**  
 11'4" x 21'3"  
 3.46 x 6.50 m



**Approximate total area<sup>(1)</sup>**  
 614 ft<sup>2</sup>  
 57 m<sup>2</sup>

(1) Excluding balconies and terraces

Calculations reference the RICS IPMS  
 3C standard. Measurements are  
 approximate and not to scale. This  
 floor plan is intended for illustration  
 only.

GIRAFFE360



## JDG Estate Agents

66 Market Street, Lancaster - LA1 1HP

01524 843322 • sales@jdg.co.uk • www.jdg.co.uk/